

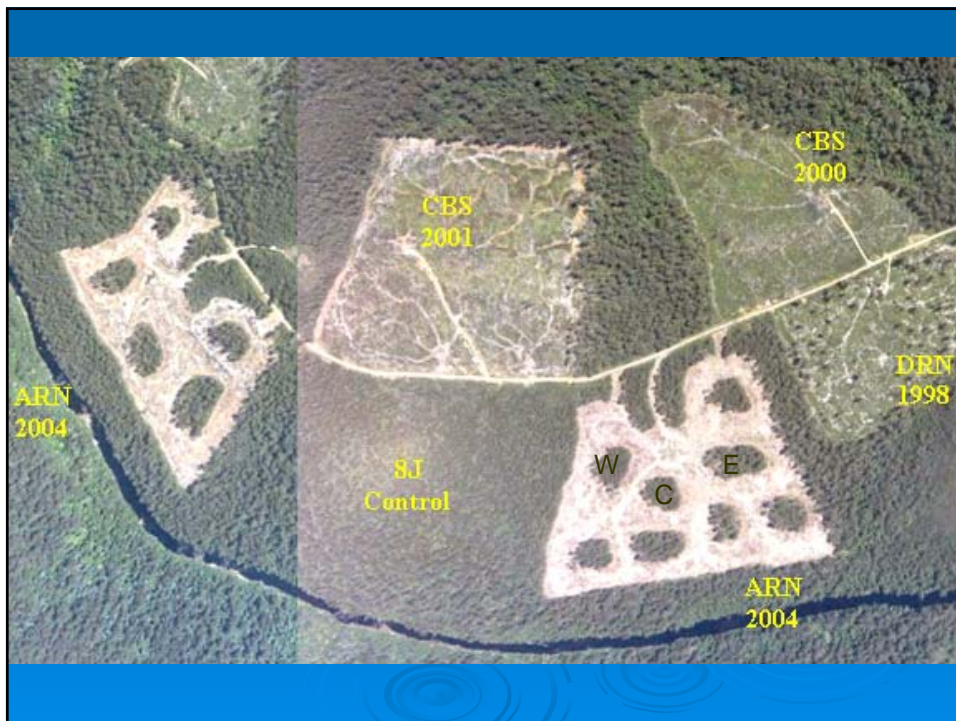
How well does aggregated retention cater for early and late successional macrofungi?

Genevieve M. Gates^{1,2}, David A. Ratkowsky^{1,2}, Simon J. Grove³

Schools of ¹Agricultural Science and ²Plant Science
University of Tasmania, Hobart, and
³Forestry Tasmania, Hobart



Forestry Tasmania
GROWING OUR FUTURE



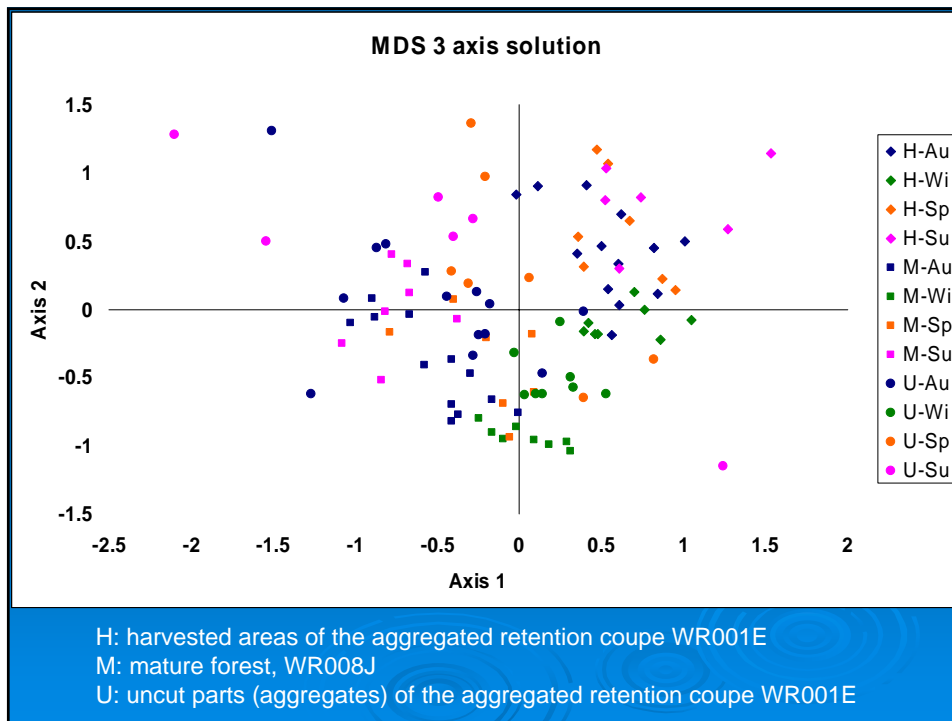


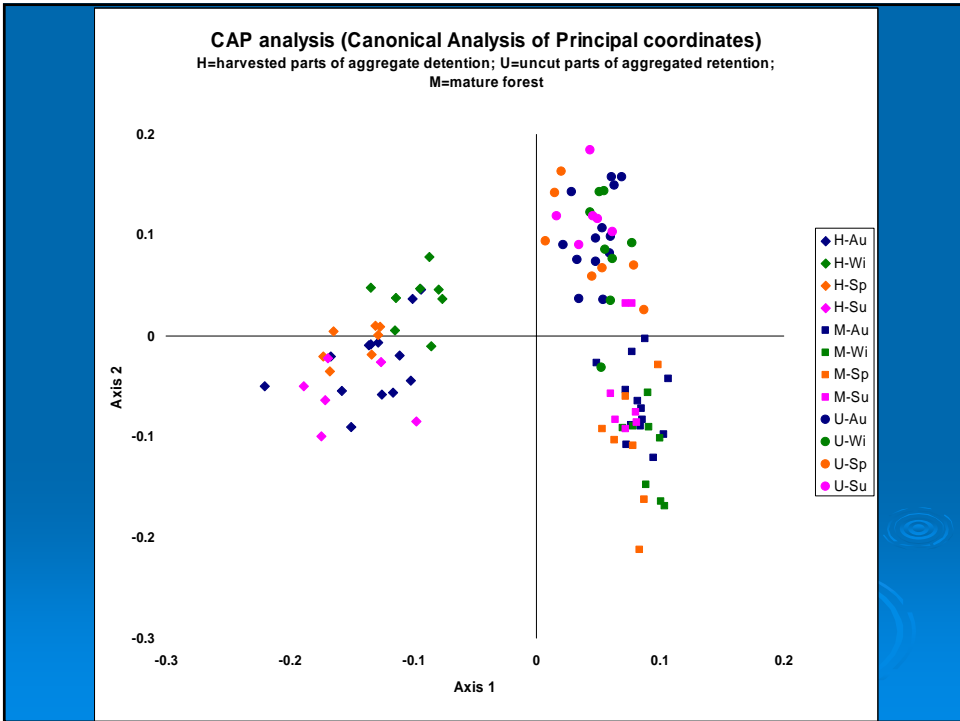
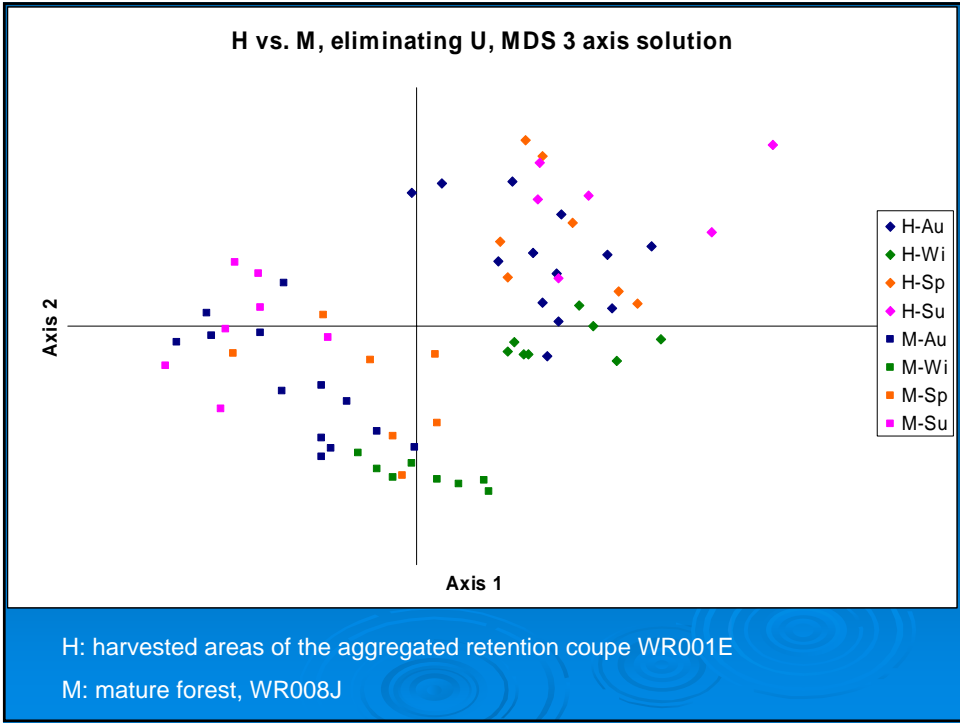
WR001E
Aggregated
retention coupe

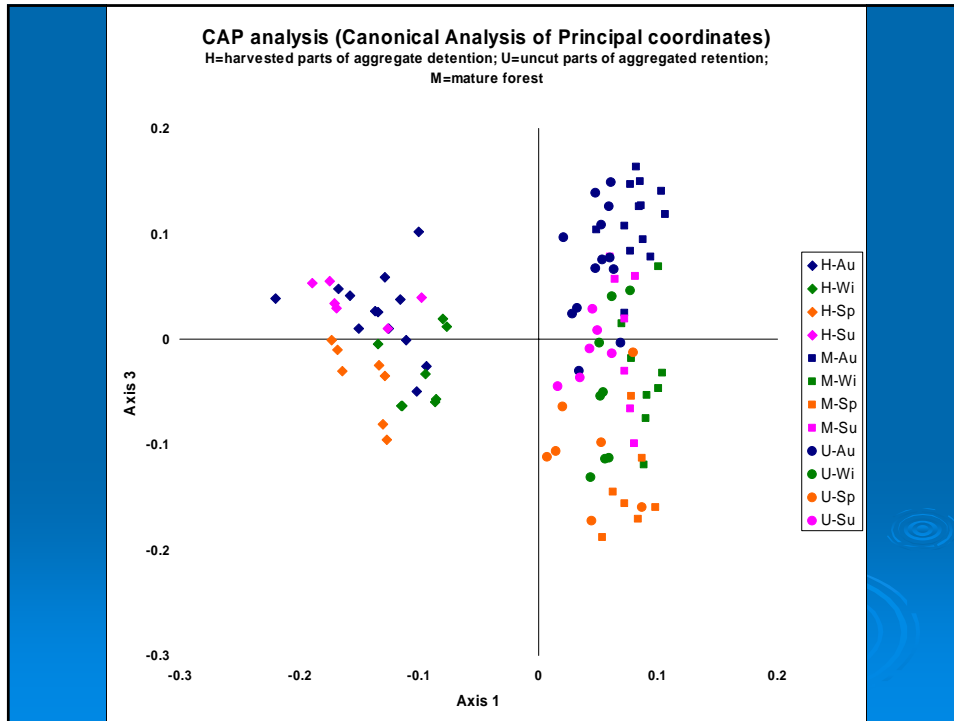


WR008H
Clearfell, Burn, Sow

WR008J
Mature forest



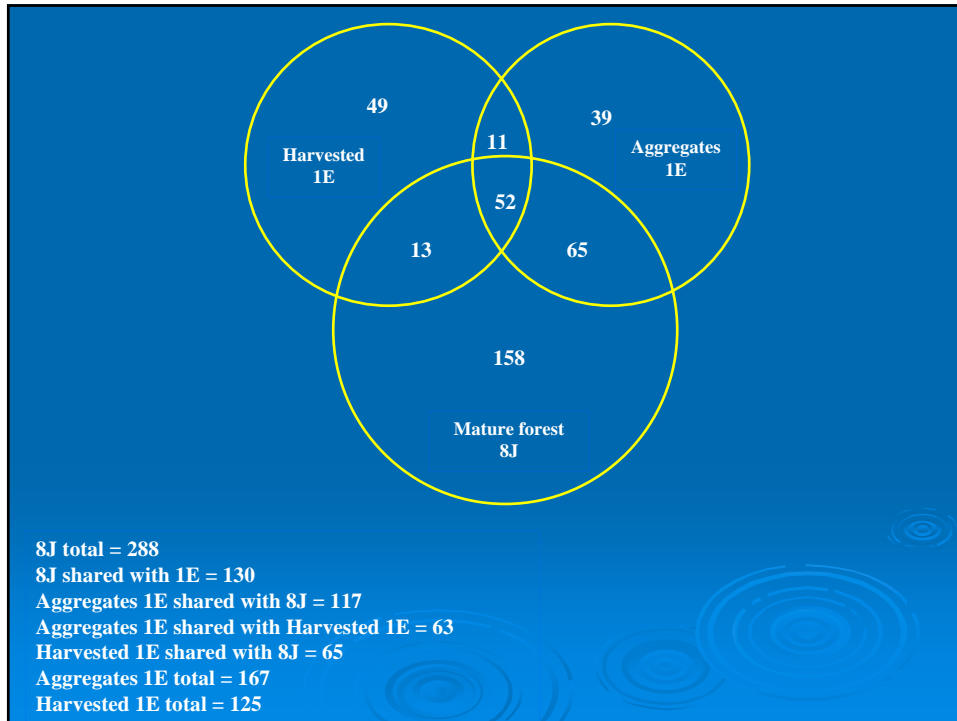




CAP analysis classification table:

Initial Group	Classified into groups												Total	% Correct
	H Au	H Wi	H Sp	H Su	M Au	M Wi	M Sp	M Su	U Au	U Wi	U Sp	U Su		
HAu	6	2	1	4	0	0	0	0	0	0	0	0	13	46.2%
HWi	0	8	0	0	0	0	0	0	0	0	0	0	8	100.0%
HSp	1	1	3	2	0	0	0	0	0	0	0	0	7	42.9%
HSu	0	0	2	4	0	0	0	0	0	0	0	0	6	66.7%
MAu	0	0	0	0	11	1	0	1	0	0	0	0	13	84.6%
MWi	0	0	0	0	1	7	0	0	0	0	0	0	8	87.5%
MSp	0	0	0	0	0	1	3	3	0	0	0	0	7	42.9%
MSu	0	0	0	0	0	0	1	6	0	0	0	0	7	85.7%
UAu	0	0	0	0	1	0	0	0	9	1	1	1	13	69.2%
UWi	0	0	0	0	0	0	0	0	1	5	2	0	8	62.5%
USp	0	0	0	0	0	0	1	0	0	1	3	2	7	42.9%
USu	0	0	0	0	0	0	0	0	3	0	0	3	6	50.0%

Total correct = 68/103 = 66.0%
Misclassification error = 34.0%
Permutation test: P = 0.000200 (No. of permutations used = 4999)



Species exclusive to the mature and/or uncut forest, occurring at least 10 times

- Boletellus obscurecoccineus* (Höhn.) Singer
- Cantharellus concinnus* Berk.
- Cortinarius* "C48, lilac and brown, Phlegmacium"
- Cortinarius* "C62, varnished, golden brown with sharp reddish umbo"
- Entoloma austroprunicolor* G. Gates & Noordel.
- Galerina* 'with sphaeropedunculate cheilocystidia'
- Lactarius clarkeae* Cleland
- Lactarius eucalypti* O.K. Mill. & R.N. Hilton
- Marasmiellus affixus* (Berk.) Singer
- Mycena interrupta* (Berk.) Sacc.
- Mycena toyerlaricola* Grgur.
- Phellodon niger* (Fr. : Fr.) P. Karst.
- Pholiota squarrosipes* Cleland
- Podoserpula pusio* (Berk.) D.A. Reid
- Pulveroboletus ravenelii* (Berk. & M.A. Curt.) Murrill
- Ryvardenia campyla* (Berk.) Rajchenb.
- Stereum ostrea* (Blume & Nees : Fr.) Fr.



Species exclusive to the harvested areas, occurring at least 10 times

Aleuria aurantia (Pers.) Fuckel
Byssomerulius corium (Pers.: Fr.) Parmasto
Coprinellus angulatus (Peck) Redhead, Vilgalys & Moncalvo
Galerina nana (Petri) Kühner
Loreleia marchantiae (Singer & Cléménçon) Redhead, Moncalvo, Vilgalys & Lutzoni
Lyophyllum sp. 'small, brown'
Mycena 'brown striate, becoming sulcate'
Pholiota highlandensis (Peck) A.H. Sm. & Hesler
Pycnoporus coccineus (Fr.) Bondartsev & Singer
Schizophyllum commune Fr.: Fr.



Acknowledgments:

Thanks are accorded to the University of Tasmania for making an office and computer available to one of us (DAR), and to Forestry Tasmania for a Warra small projects grant that made the field work possible.

